

Bauscher Leaflet

You've got the following items on your leaflet



options | Coffeepot 0.30

Order No.: 71 4130
 Volume l (fl. oz.): 0.30 (10.14)
 Diameter mm (inch): 127 (5.00)
 Height 1/11 pieces mm: 124 (-)
 Weight g: 350

quantity



options | Coffeepot bottom 0.30

Order No.: 71 4131
 Volume l (fl. oz.): 0.30 (10.14)
 Diameter mm (inch): 127 (5.00)
 Height 1/11 pieces mm: 107 (-)
 Weight g: 325

quantity



options | Coffeepot cover 0.30

Order No.: 71 4132
 Volume l (fl. oz.): - (-)
 Diameter mm (inch): 44 (1.73)
 Height 1/11 pieces mm: 30 (-)
 Weight g: 24

quantity



options | Teapot 0.35

Order No.: 71 4335
 Volume l (fl. oz.): 0.35 (11.83)
 Diameter mm (inch): 153 (6.02)
 Height 1/11 pieces mm: 101 (-)
 Weight g: 370

quantity



options | Teapot bottom 0.35

Order No.: 71 4336
 Volume l (fl. oz.): 0.35 (11.83)
 Diameter mm (inch): 153 (6.02)
 Height 1/11 pieces mm: 81 (-)
 Weight g: 330

quantity



options | Teapot cover 0.35

Order No.: 71 4337
 Volume l (fl. oz.): - (-)
 Diameter mm (inch): 55 (2.17)
 Height 1/11 pieces mm: 34 (-)
 Weight g: 40

quantity



options | Creamer without handle 0.05

Order No.: 71 4605
 Volume l (fl. oz.): 0.05 (1.69)
 Diameter mm (inch): 56 (2.20)
 Height 1/11 pieces mm: 62 (-)
 Weight g: 76

quantity



options | Creamer with handle 0.15

Order No.: 71 4715
Volume l (fl. oz.): 0.15 (5.07)
Diameter mm (inch): 96 (3.78)
Height 1/11 pieces mm: 82 (-)
Weight g: 160

quantity



options | Egg cup

Order No.: 71 4001
Volume l (fl. oz.): - (-)
Diameter mm (inch): 52 (2.05)
Height 1/11 pieces mm: 40 (145 (5))
Weight g: 70

quantity



options | Saucer round coup 09

Order No.: 71 6909
Volume l (fl. oz.): - (-)
Diameter mm (inch): 120 (4.72)
Height 1/11 pieces mm: 18 (103)
Weight g: 121

quantity



options | Saucer triangular coup 09

Order No.: 71 7009
Volume l (fl. oz.): - (-)
Diameter mm (inch): 111 (4.37)
Height 1/11 pieces mm: 16 (98)
Weight g: 107

quantity



options | Cup 0.09

Order No.: 71 5159
Volume l (fl. oz.): 0.09 (3.04)
Diameter mm (inch): 60 (2.36)
Height 1/11 pieces mm: 66 (-)
Weight g: 115

quantity



options | Saucer round coup 09

Order No.: 71 6909
Volume l (fl. oz.): - (-)
Diameter mm (inch): 120 (4.72)
Height 1/11 pieces mm: 18 (103)
Weight g: 121

quantity



options | Saucer triangular coup 09

Order No.: 71 7009
Volume l (fl. oz.): - (-)
Diameter mm (inch): 111 (4.37)
Height 1/11 pieces mm: 16 (98)
Weight g: 107

quantity



options | Cup 0.18

Order No.: 71 5168
Volume l (fl. oz.): 0.18 (6.09)
Diameter mm (inch): 76 (2.99)
Height 1/11 pieces mm: 75 (-)
Weight g: 140

quantity



options | Saucer round coup 18

Order No.: 71 6918
Volume l (fl. oz.): - (-)
Diameter mm (inch): 150 (5.91)
Height 1/11 pieces mm: 17 (105)
Weight g: 185

quantity



options | Saucer square coup 18

Order No.: 71 7118
Volume l (fl. oz.): - (-)
Diameter mm (inch): 151 (5.94)
Height 1/11 pieces mm: 16 (100)
Weight g: 155

quantity



options | Cup 0.22

Order No.: 71 5172
Volume l (fl. oz.): 0.22 (7.44)
Diameter mm (inch): 75 (2.95)
Height 1/11 pieces mm: 88 (-)
Weight g: 180

quantity



options | Saucer round coup 18

Order No.: 71 6918
Volume l (fl. oz.): - (-)
Diameter mm (inch): 150 (5.91)
Height 1/11 pieces mm: 17 (105)
Weight g: 185

quantity



options | Saucer square coup 18

Order No.: 71 7118
Volume l (fl. oz.): - (-)
Diameter mm (inch): 151 (5.94)
Height 1/11 pieces mm: 16 (100)
Weight g: 155

quantity



options | Cup 0.22

Order No.: 72 5172
Volume l (fl. oz.): 0.22 (7.44)
Diameter mm (inch): 105 (4.13)
Height 1/11 pieces mm: 48 (-)
Weight g: 150

quantity



options | Saucer round coup 18

Order No.: 71 6918
Volume l (fl. oz.): - (-)
Diameter mm (inch): 150 (5.91)
Height 1/11 pieces mm: 17 (105)
Weight g: 185

quantity



options | Cup 0.26

Order No.: 71 5176
Volume l (fl. oz.): 0.26 (8.79)
Diameter mm (inch): 105 (4.13)
Height 1/11 pieces mm: 63 (-)
Weight g: 170

quantity

options | Saucer round coup 18



Order No.: 71 6918
 Volume l (fl. oz.): - (-)
 Diameter mm (inch): 150 (5.91)
 Height 1/11 pieces mm: 17 (105)
 Weight g: 185

quantity



options | Saucer square coup 18

Order No.: 71 7118
 Volume l (fl. oz.): - (-)
 Diameter mm (inch): 151 (5.94)
 Height 1/11 pieces mm: 16 (100)
 Weight g: 155

quantity



options | Cup 0.44

Order No.: 71 5190
 Volume l (fl. oz.): 0.44 (14.88)
 Diameter mm (inch): 120 (4.72)
 Height 1/11 pieces mm: 79 (-)
 Weight g: 290

quantity



options | Saucer round coup 40

Order No.: 71 6940
 Volume l (fl. oz.): - (-)
 Diameter mm (inch): 191 (7.52)
 Height 1/11 pieces mm: 19 (97)
 Weight g: 340

quantity



options | Cup 0.19 stackable

Order No.: 71 5317
 Volume l (fl. oz.): 0.19 (6.42)
 Diameter mm (inch): 72 (2.83)
 Height 1/11 pieces mm: 72 (334(5))
 Weight g: 190

quantity



options | Saucer 18

Order No.: 71 6915
 Volume l (fl. oz.): - (-)
 Diameter mm (inch): 147 (5.79)
 Height 1/11 pieces mm: 21 (113)
 Weight g: 170

quantity



options | Mug 0.26

Order No.: 71 5626
 Volume l (fl. oz.): 0.26 (8.79)
 Diameter mm (inch): 77 (3.03)
 Height 1/11 pieces mm: 106 (695)
 Weight g: 240

quantity



options | Saucer round coup 18

Order No.: 71 6918
 Volume l (fl. oz.): - (-)
 Diameter mm (inch): 150 (5.91)
 Height 1/11 pieces mm: 17 (105)
 Weight g: 185

quantity

options | Mug 0.28



Order No.: 71 5628
Volume l (fl. oz.): 0.28 (9.47)
Diameter mm (inch): 77 (3.03)
Height 1/11 pieces mm: 112 (-)
Weight g: 310

quantity

options | Saucer round coup 18



Order No.: 71 6918
Volume l (fl. oz.): - (-)
Diameter mm (inch): 150 (5.91)
Height 1/11 pieces mm: 17 (105)
Weight g: 185

quantity

options | Cream soup cup 0.26



Order No.: 71 2726
Volume l (fl. oz.): 0.26 (8.79)
Diameter mm (inch): 105 (4.13)
Height 1/11 pieces mm: 63 (-)
Weight g: 180

quantity

options | Saucer round coup 18



Order No.: 71 6918
Volume l (fl. oz.): - (-)
Diameter mm (inch): 150 (5.91)
Height 1/11 pieces mm: 17 (105)
Weight g: 185

quantity

options | Saucer square coup 18



Order No.: 71 7118
Volume l (fl. oz.): - (-)
Diameter mm (inch): 151 (5.94)
Height 1/11 pieces mm: 16 (100)
Weight g: 155

quantity

options | Cream soup cup 0.27 stackable



Order No.: 71 2826
Volume l (fl. oz.): 0.27 (9.13)
Diameter mm (inch): 98 (3.86)
Height 1/11 pieces mm: 56 (223(5))
Weight g: 260

quantity

options | Saucer 18



Order No.: 71 6915
Volume l (fl. oz.): - (-)
Diameter mm (inch): 147 (5.79)
Height 1/11 pieces mm: 21 (113)
Weight g: 170

quantity

options | Bowl 0.26



Order No.: 71 6526
Volume l (fl. oz.): 0.26 (8.79)
Diameter mm (inch): 105 (4.13)
Height 1/11 pieces mm: 63 (150)
Weight g: 160

quantity

options | Tea cup



Order No.: 71 5315
Volume l (fl. oz.): 0.15 (5.07)
Diameter mm (inch): 87 (3.43)
Height 1/11 pieces mm: 45 (-)
Weight g: 110

quantity

options | Plate flat coup round 15



Order No.: 71 1215
Volume l (fl. oz.): - (-)
Diameter mm (inch): 150 (5.91)
Height 1/11 pieces mm: 17 (105)
Weight g: 184

quantity

options | Plate flat coup round 17



Order No.: 71 1217
Volume l (fl. oz.): - (-)
Diameter mm (inch): 170 (6.69)
Height 1/11 pieces mm: 18 (104)
Weight g: 235

quantity

options | Plate flat coup round 28



Order No.: 71 1228
Volume l (fl. oz.): - (-)
Diameter mm (inch): 281 (11.06)
Height 1/11 pieces mm: 23 (128)
Weight g: 835

quantity

options | Plate flat coup round 30



Order No.: 71 1230
Volume l (fl. oz.): - (-)
Diameter mm (inch): 301 (11.85)
Height 1/11 pieces mm: 24 (140)
Weight g: 950

quantity

options | Plate flat coup round 32



Order No.: 71 1232
Volume l (fl. oz.): - (-)
Diameter mm (inch): 318 (12.52)
Height 1/11 pieces mm: 24 (129)
Weight g: 1070

quantity

options | Plate flat coup square 15



Order No.: 71 1915
Volume l (fl. oz.): - (-)
Diameter mm (inch): 151 (5.94)
Height 1/11 pieces mm: 16 (100)
Weight g: 155

quantity

options | Plate flat coup square 21



Order No.: 71 1920
Volume l (fl. oz.): - (-)
Diameter mm (inch): 216 (8.50)
Height 1/11 pieces mm: 22 (120)
Weight g: 400

quantity

options | Plate flat coup square 27



Order No.: 71 1927
 Volume l (fl. oz.): - (-)
 Diameter mm (inch): 273 (10.75)
 Height 1/11 pieces mm: 26 (135)
 Weight g: 660

quantity

options | Plate flat coup square 32



Order No.: 71 1932
 Volume l (fl. oz.): - (-)
 Diameter mm (inch): 320 (12.60)
 Height 1/11 pieces mm: 23 (130)
 Weight g: 860

quantity

options | Plate flat coup triangular 11



Order No.: 71 1511
 Volume l (fl. oz.): - (-)
 Diameter mm (inch): 111 (4.37)
 Height 1/11 pieces mm: 16 (98)
 Weight g: 104

quantity

options | Plate flat coup triangular 20



Order No.: 71 1520
 Volume l (fl. oz.): - (-)
 Diameter mm (inch): 205 (8.07)
 Height 1/11 pieces mm: 22 (120)
 Weight g: 400

quantity

options | Plate flat coupe square with center 27



Order No.: 71 7227
 Volume l (fl. oz.): - (-)
 Diameter mm (inch): 271 (10.67)
 Height 1/11 pieces mm: 26 (135)
 Weight g: 670

quantity

options | Plate flat coupe square with center 32



Order No.: 71 7232
 Volume l (fl. oz.): - (-)
 Diameter mm (inch): 324 (12.76)
 Height 1/11 pieces mm: 25 (135)
 Weight g: 940

quantity

options | Plate deep coup round 18



Order No.: 71 1318
 Volume l (fl. oz.): 0.52 (17.58)
 Diameter mm (inch): 180 (7.09)
 Height 1/11 pieces mm: 46 (150)
 Weight g: 360

quantity

options | Plate deep coup round 24



Order No.: 71 1324
 Volume l (fl. oz.): 1.00 (33.81)
 Diameter mm (inch): 239 (9.41)
 Height 1/11 pieces mm: 45 (137)
 Weight g: 585

quantity

options | Plate deep coup round 30



Order No.: 71 1330
 Volume l (fl. oz.): 1.70 (57.48)
 Diameter mm (inch): 302 (11.89)
 Height 1/11 pieces mm: 51 (157)
 Weight g: 945

quantity



options | Plate deep coup square 30

Order No.: 71 1830
 Volume l (fl. oz.): 1.06 (35.84)
 Diameter mm (inch): 303 (11.93)
 Height 1/11 pieces mm: 50 (157)
 Weight g: 800

quantity



options | Plate deep coup triangular 30

Order No.: 71 1630
 Volume l (fl. oz.): 1.13 (38.21)
 Diameter mm (inch): 285 (11.22)
 Height 1/11 pieces mm: 50 (150)
 Weight g: 800

quantity



options | Plate half-deep coup round 24

Order No.: 71 1424
 Volume l (fl. oz.): 0.65 (21.98)
 Diameter mm (inch): 240 (9.45)
 Height 1/11 pieces mm: 32 (135)
 Weight g: 560

quantity



options | Plate half-deep coup round 28

Order No.: 71 1428
 Volume l (fl. oz.): 0.87 (29.41)
 Diameter mm (inch): 282 (11.10)
 Height 1/11 pieces mm: 34 (143)
 Weight g: 820

quantity



options | Plate half-deep coup round 31

Order No.: 71 1431
 Volume l (fl. oz.): 1.20 (40.57)
 Diameter mm (inch): 307 (12.09)
 Height 1/11 pieces mm: 39 (165)
 Weight g: 1060

quantity



options | Gourmet platter 32

Order No.: 71 2632
 Volume l (fl. oz.): - (-)
 Diameter mm (inch): 318 (12.52)
 Height 1/11 pieces mm: 21 (127)
 Weight g: 1000

quantity



options | Platter coup rectangular 14

Order No.: 71 2314
 Volume l (fl. oz.): - (-)
 Diameter mm (inch): 139 x 94 (5.47x3.70)
 Height 1/11 pieces mm: 18 (110)
 Weight g: 139

quantity

options | Platter coup rectangular 28



Order No.: 71 2328
 Volume l (fl. oz.): - (-)
 Diameter mm (inch): 278x182 (10.94x7.17)
 Height 1/11 pieces mm: 23 (135)
 Weight g: 570

quantity



options | Platter coup rectangular 32

Order No.: 71 2332
 Volume l (fl. oz.): - (-)
 Diameter mm (inch): 320x231 (12.60x9.09)
 Height 1/11 pieces mm: 26 (140)
 Weight g: 965

quantity



options | Platter coup rectangular 36

Order No.: 71 2336
 Volume l (fl. oz.): - (-)
 Diameter mm (inch): 361x231 (14.21x9.09)
 Height 1/11 pieces mm: 28 (140)
 Weight g: 1020

quantity



options | Platter coup narrow rectangular 41

Order No.: 71 2341
 Volume l (fl. oz.): - (-)
 Diameter mm (inch): 414x212 (16.30x8.35)
 Height 1/11 pieces mm: 22 (111)
 Weight g: 1170

quantity



options | Bowl oval 0.10

Order No.: 71 3810
 Volume l (fl. oz.): 0.08 (2.70)
 Diameter mm (inch): 108x 61 (4.25x2.40)
 Height 1/11 pieces mm: 43 (-)
 Weight g: 97

quantity



options | Bowl oval 14

Order No.: 71 3364
 Volume l (fl. oz.): 0.27 (9.13)
 Diameter mm (inch): 143x 85 (5.63x3.35)
 Height 1/11 pieces mm: 66 (-)
 Weight g: 230

quantity



options | Bowl round 14

Order No.: 71 3014
 Volume l (fl. oz.): 0.32 (10.82)
 Diameter mm (inch): 141 (5.55)
 Height 1/11 pieces mm: 43 (129)
 Weight g: 200

quantity



options | Bowl round 16

Order No.: 71 3016
 Volume l (fl. oz.): 0.51 (17.24)
 Diameter mm (inch): 165 (6.50)
 Height 1/11 pieces mm: 48 (120)
 Weight g: 270

quantity

options | Pepper shaker



Order No.: 71 4020
 Volume l (fl. oz.): - (-)
 Diameter mm (inch): 50 (1.97)
 Height 1/11 pieces mm: 102 (-)
 Weight g: 100

quantity



options | Flower vase

Order No.: 71 8100
 Volume l (fl. oz.): - (-)
 Diameter mm (inch): 69 (2.72)
 Height 1/11 pieces mm: 153 (-)
 Weight g: 220

quantity



options | Candleholder

Order No.: 71 7700
 Volume l (fl. oz.): - (-)
 Diameter mm (inch): 69 (2.72)
 Height 1/11 pieces mm: 120 (-)
 Weight g: 165

quantity



options | Ashtray

Order No.: 71 7500
 Volume l (fl. oz.): - (-)
 Diameter mm (inch): 92 (3.62)
 Height 1/11 pieces mm: 34 (1.25)
 Weight g: 100

quantity



options | Porcelain spoon

Order No.: 71 7900
 Volume l (fl. oz.): - (-)
 Diameter mm (inch): 130x45 (5,11x1,77)
 Height 1/11 pieces mm: - (-)
 Weight g: 45

quantity



options | Chop stick rest

Order No.: 71 7901
 Volume l (fl. oz.): - (-)
 Diameter mm (inch): 65x20 (2,55x0,78)
 Height 1/11 pieces mm: 20 (-)
 Weight g: 30

quantity



options | Etagère plate flat coup round 20

Order No.: 71 7203
 Volume l (fl. oz.): - (-)
 Diameter mm (inch): 202 (7.95)
 Height 1/11 pieces mm: 17 (-)
 Weight g: 340

quantity



options | Etagère plate flat coup round 26

Order No.: 71 7202
 Volume l (fl. oz.): - (-)
 Diameter mm (inch): 261 (10.28)
 Height 1/11 pieces mm: 20 (-)
 Weight g: 696

quantity

options | Metal stand, nickel-plated



Order No.: 20 7802
 Volume l (fl. oz.): - (-)
 Diameter mm (inch): - (-)
 Height 1/11 pieces mm: - (-)
 Weight g: -

quantity



options | Etagère plate flat coup round 20

Order No.: 71 7203
 Volume l (fl. oz.): - (-)
 Diameter mm (inch): 202 (7.95)
 Height 1/11 pieces mm: 17 (-)
 Weight g: 340

quantity



options | Etagère plate flat coup round 26

Order No.: 71 7202
 Volume l (fl. oz.): - (-)
 Diameter mm (inch): 261 (10.28)
 Height 1/11 pieces mm: 20 (-)
 Weight g: 696

quantity



options | Etagère plate flat coup round 32

Order No.: 71 7201
 Volume l (fl. oz.): - (-)
 Diameter mm (inch): 318 (12.52)
 Height 1/11 pieces mm: 24 (-)
 Weight g: 1070

quantity



options | Metal stand, nickel-plated

Order No.: 20 7804
 Volume l (fl. oz.): - (-)
 Diameter mm (inch): - (-)
 Height 1/11 pieces mm: - (-)
 Weight g: -

quantity



options | Etagère plate flat coup square 21

Order No.: 71 7206
 Volume l (fl. oz.): - (-)
 Diameter mm (inch): 216 (8.50)
 Height 1/11 pieces mm: 22 (-)
 Weight g: 400

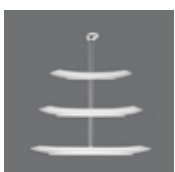
quantity



options | Etagère plate flat coup square 27

Order No.: 71 7205
 Volume l (fl. oz.): - (-)
 Diameter mm (inch): 273 (10.75)
 Height 1/11 pieces mm: 26 (-)
 Weight g: 660

quantity



options | Etagère plate flat coup square 21

Order No.: 71 7206
 Volume l (fl. oz.): - (-)
 Diameter mm (inch): 216 (8.50)
 Height 1/11 pieces mm: 22 (-)
 Weight g: 400

quantity

options | Etagère plate flat coup square 27



Order No.: 71 7205
Volume l (fl. oz.): - (-)
Diameter mm (inch): 273 (10.75)
Height 1/11 pieces mm: 26 (-)
Weight g: 660

quantity



options | Etagère plate flat coup square 32

Order No.: 71 7204
Volume l (fl. oz.): - (-)
Diameter mm (inch): 320 (12.60)
Height 1/11 pieces mm: 23 (-)
Weight g: 860

quantity



options | Metal stand, nickel-plated

Order No.: 20 7808
Volume l (fl. oz.): - (-)
Diameter mm (inch): - (-)
Height 1/11 pieces mm: - (-)
Weight g: -

quantity